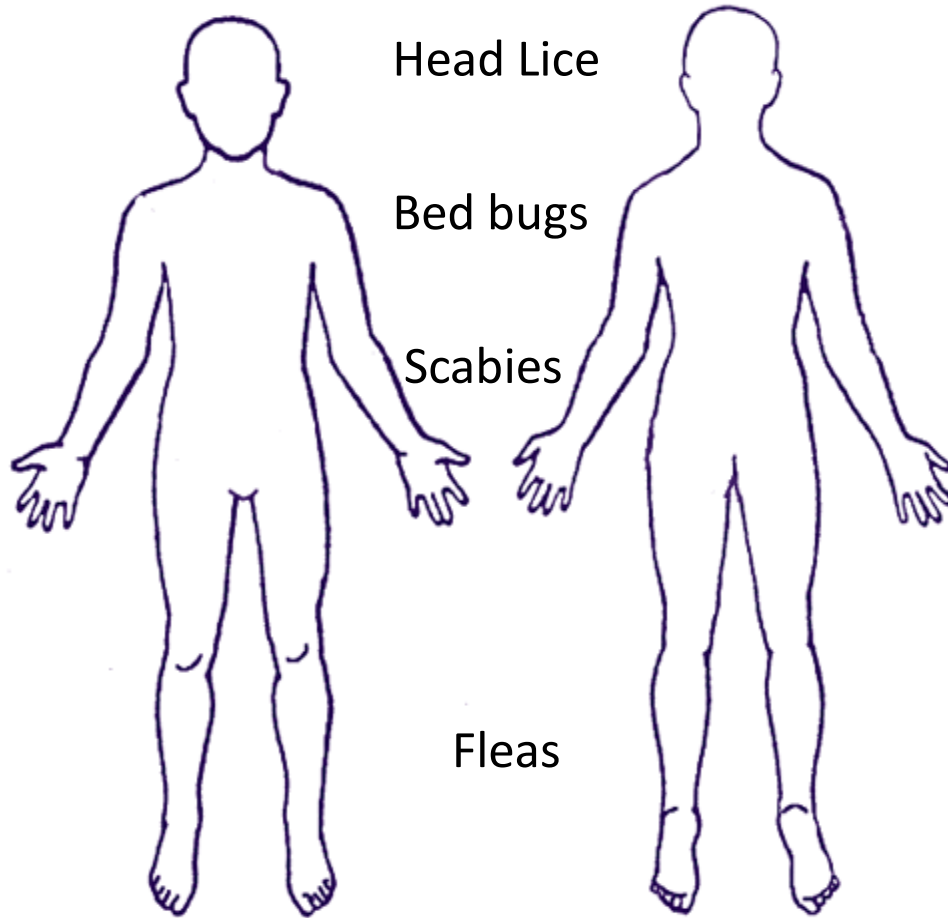


Scabies & Bedbugs & Lice Oh My!



Head to Toe



HEAD LICE

Tan, grayish-white, 6 legs, sesame seed size



HEAD LICE





HEAD LICE

- Transmission is head to head
- Shared combs, brushes, barrettes with hair
- Nit – nymph – adult
- Adult can live 30 days on a head
- Lice can run at 30cm per minute
- Dry hair checks difficult to find unless heavily infested



live louse

HEAD LICE

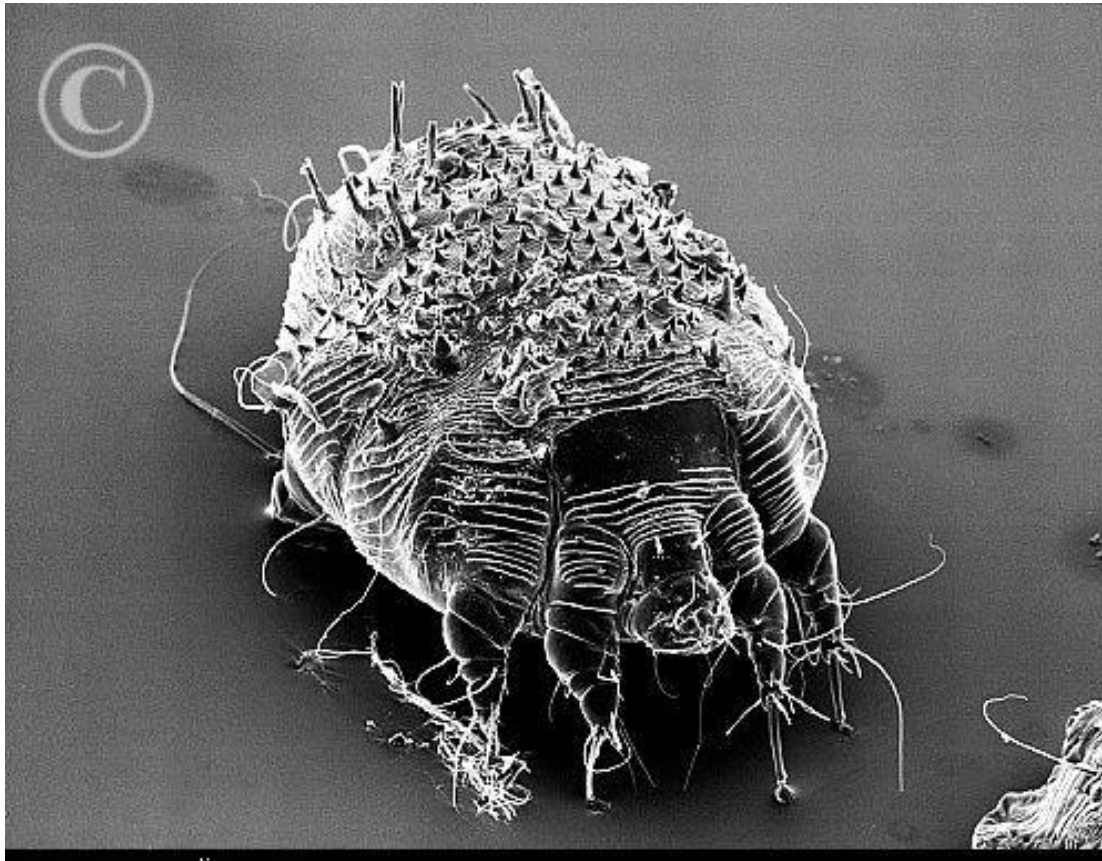
- The more often you've had head lice the longer it takes to feel itchy
- Feeling of tickling, something moving, itch
- Behind the ears, neckline, back of neck
common initial sites

TREATMENT

- Permethrin shampoo – Kwellada or Nix 5%
- Remove dead lice and nits with nit comb
- Check head daily
- Repeat process in 7-10 days
- Launder all pillows, items in contact with hair
- Soak hairbrushes and combs
- Airtight bag for 10 – 14 days not washable items
- Wear Gloves

SCABIES

- Brown & round



WE036575 [RF] © www.visualphotos.com

SCABIES

- Transmitted by person to person contact or infested clothing
- Can live in environment for up to 3 days
- ***1st time*** takes 4-6 weeks for symptoms
- Only 2 – 4 days for subsequent events
- Regular Scabies & Norwegian Scabies
- Wear gloves !!!

BITE SITES

- Scabies like the 'hot spots'
 - auxilla, groin, finger webbing ..moist warm spots that then progress up arms, legs, abdomen and back
- Regular Scabies bites have distinctive black centered dots (this is the mite)
- Will be burrows or individual bites
- Very itchy and worse at night











A baby infected with scabies







TREATMENT

- Permethrin treatment – 5% (Kwellada-P, Nix)
the 1% lotion is not effective for scabies
- Neck to toe application
- Wear gloves & gown
- Put on clean clothes
- DON'T TOUCH the discarded clothes or you'll reinfect
- Don't apply any other lotions or creams
- Shower usually 12 hours later, if no new burrows
- If there are new burrows may have to repeat in 7-10 days
- May continue to itch for 1 – 2 weeks

TREATMENT

- Launder everything you've touched since the exposure that can be washed (usually last 72 hours)
- Non washables can be put in dryer for 30 minutes
- Vacuum furniture and upholstery
- Considered infectious until after 1st treatment

BEDBUGS

- Reddish-brown, size of apple seed



BEDBUGS

- Increase since pesticide ban of DDT & increased travel between countries
- Transmit on used furniture, mattresses, 'hitchhike' on clothing
- Live for 18 months and can go 1 year without feeding
- Symptoms may take up to 9 days to appear
- No evidence they carry disease or are infectious
- No treatment for the bites

BEDBUGS

- Bed bugs are most active at night
- Can live in upholstery, furniture cracks, but prefer mattresses and bed parts
- Usually 'eat' every 2 – 3 days
- Bite in a 1-2-3 pattern – Breakfast, Lunch, Supper
- Bites are raised, red, don't require treatment
- Common sites are face, neck, hands, arms
- Prefer temperatures 70 – 80 F

















TREATMENT

- Professional exterminator required
- Some experimentation with extreme heat
- When travelling or in a new client home:
 - Use hard surface furniture
 - Place gear/suitcase on stand, not on bed
 - If concerned, garbage bag your clothes or purchases for 30 days before bringing in home
- Gloves & gown if obvious infestation

Critter	Transmission	PPE	Location	Symptom	Precautions /Isolation
Head Lice	Head to head Contact	Gloves for treatment	Scalp, hair	Itchy head Red, sore bites	Until after 1 st treatment
Scabies	Skin to skin Contact	Gloves for treatment &Gown for cleaning	'hot spots' Auxilla, groin, hand webbing	Itchy red spots or burrows with dark centers Itching worse at night	Until after 1 st treatment
Bed Bugs	Contact	Gloves & gown if large infestation	Upper body, shoulders, neck, face	Red sore bites in 1-2- 3 pattern	Inspect clothing and gear, No precautions

